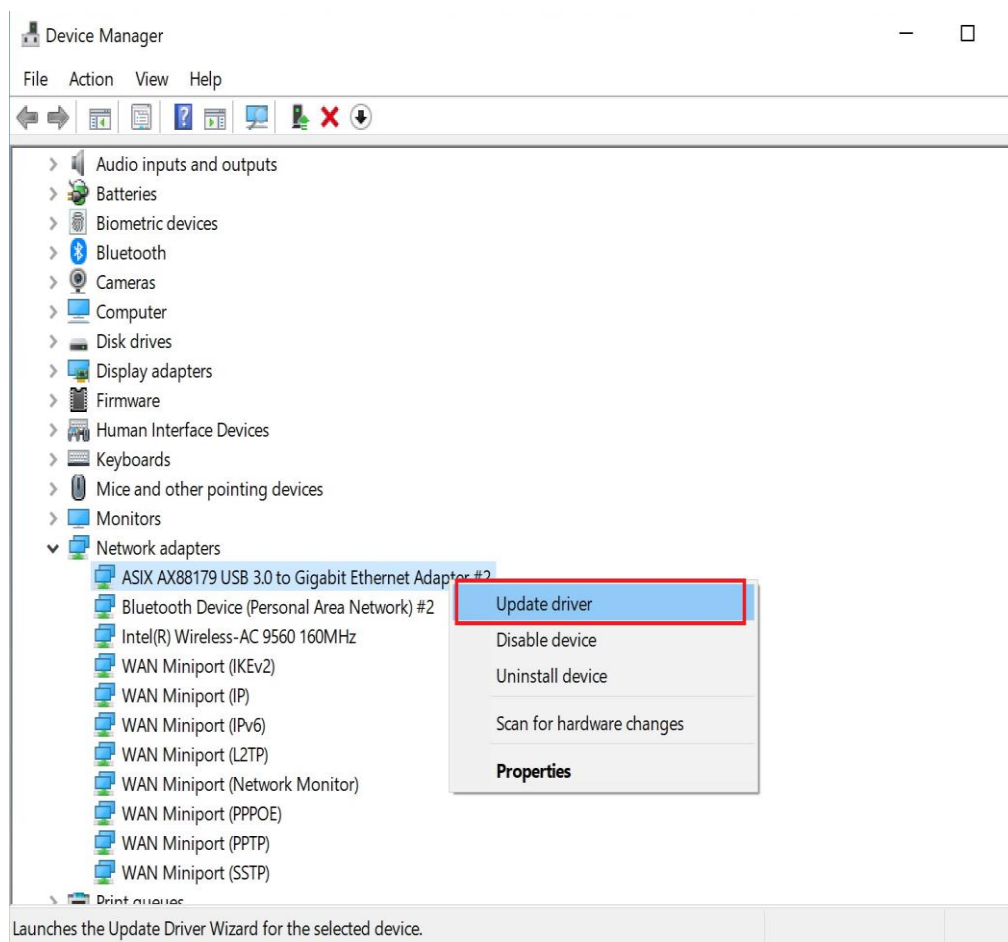


2-4. How to Install Windows driver.

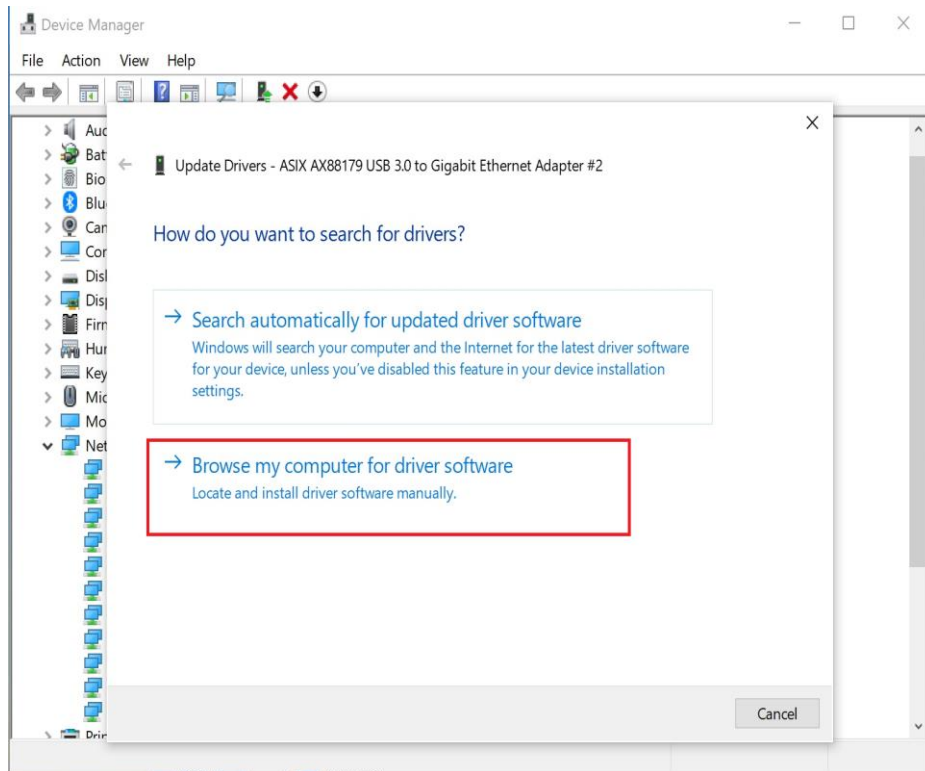
2-4-1 Force to install Windows driver (Recommended)

You can refer to below procedures to force to install the AX88179A_772D Windows driver on AX88179A & AX88772D devices. The solution adapts to all Windows platforms.

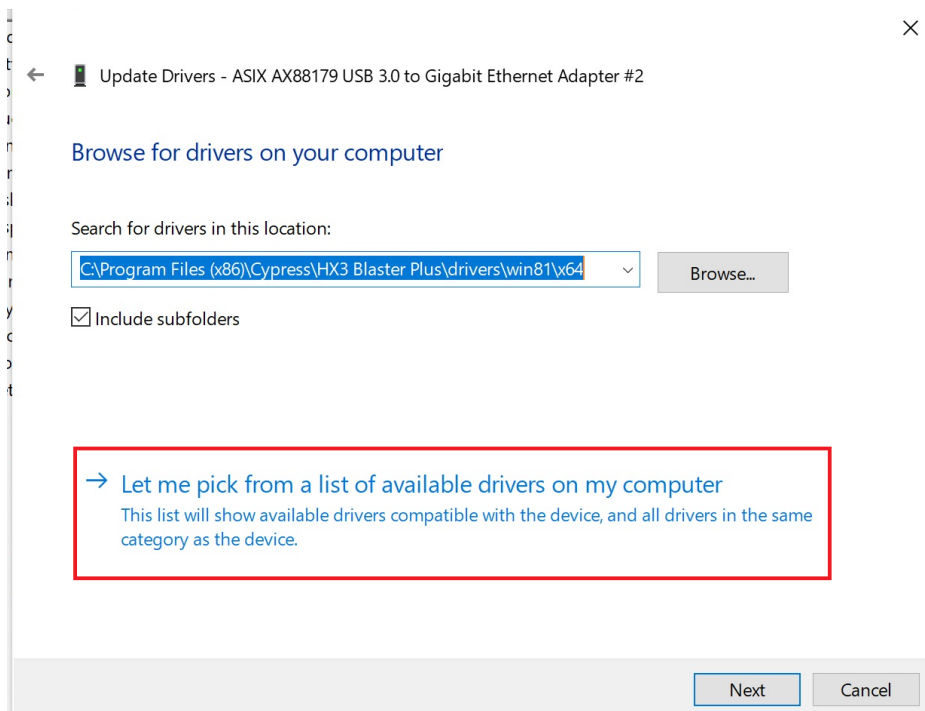
Step 1.



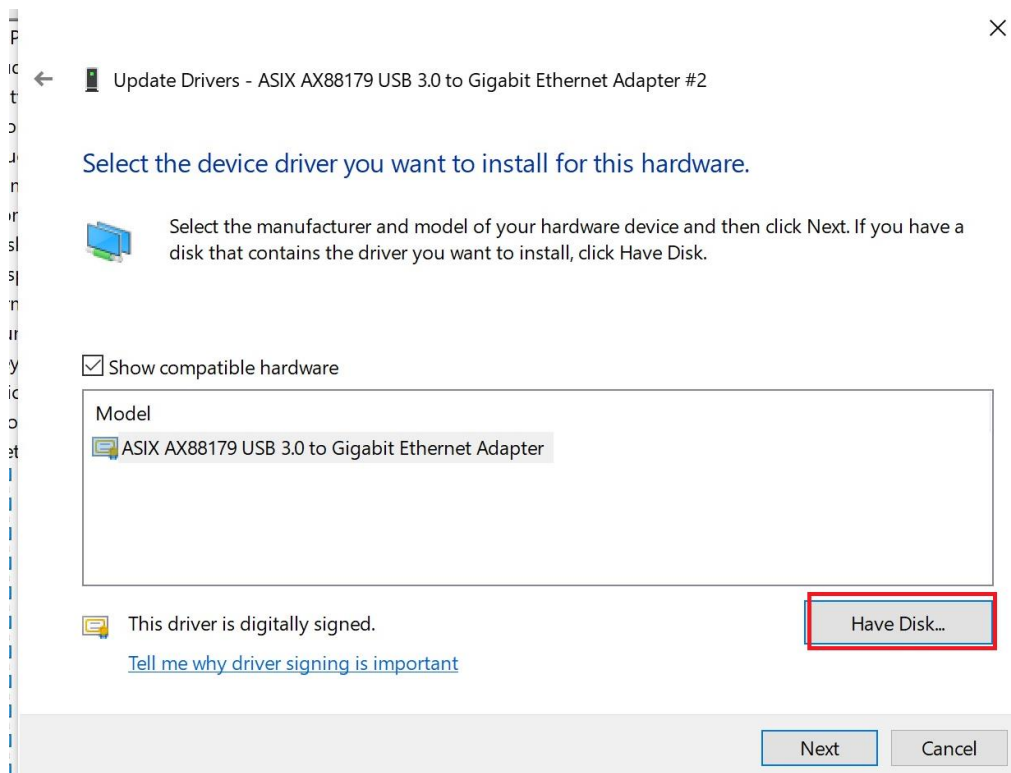
Step 2.



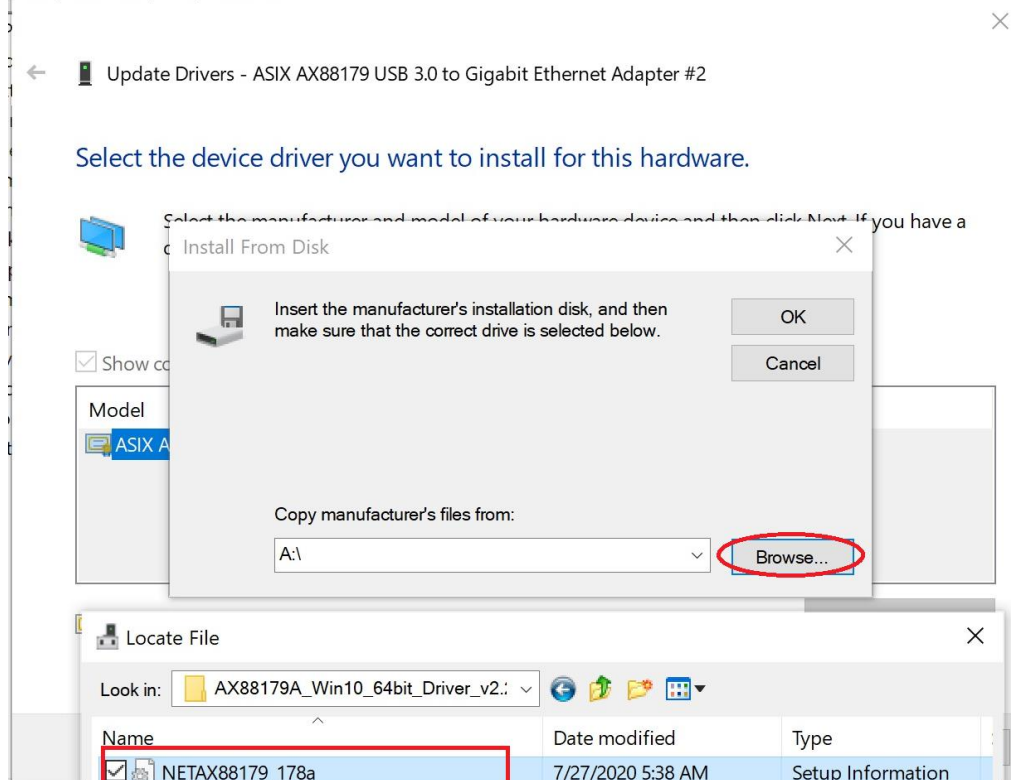
Step 3. Press below red item to force to install the Windows driver.

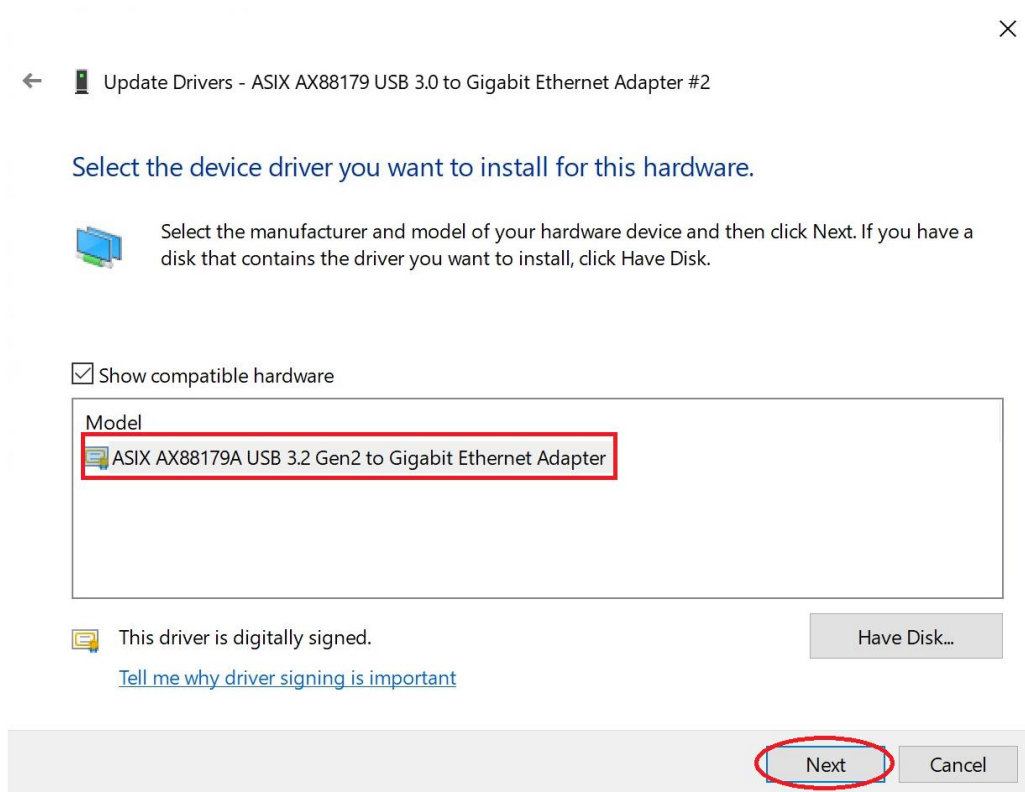
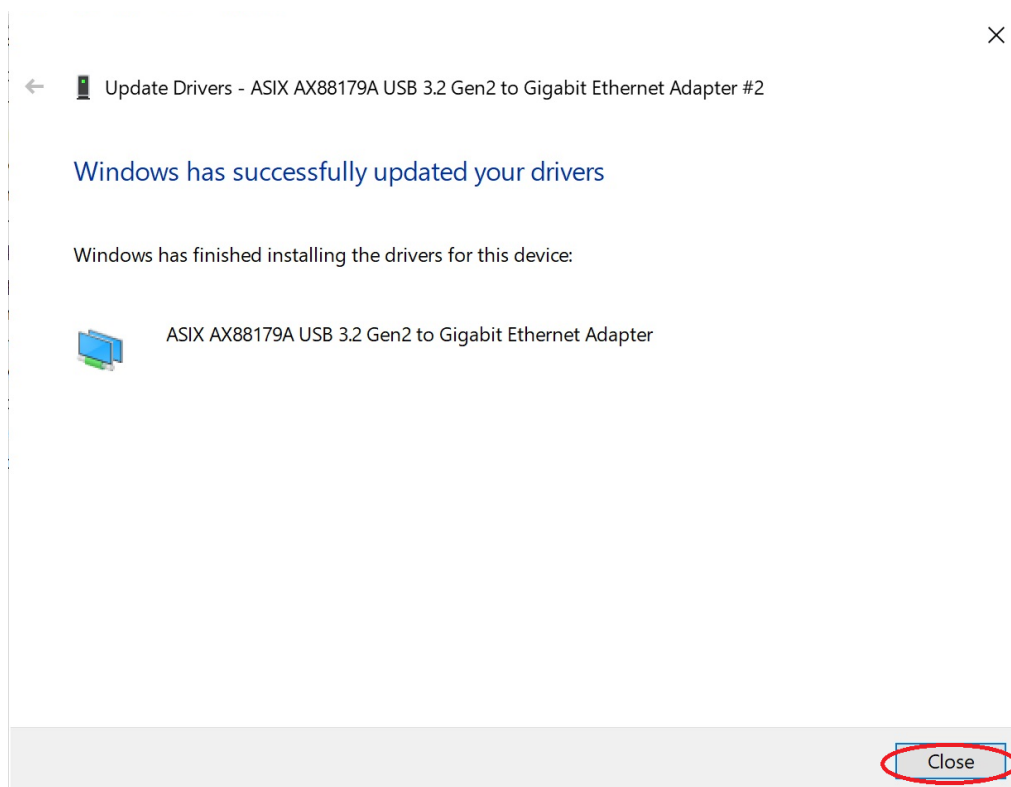


Step 4. Press “Have Disk...” button to select the Windows driver package folder.



Step 5. Select a correct folder of AX88179A_772D Windows driver package.



Step 6.**Step 7. The Windows driver is installed successfully now.**

Step 8.

